

**KEY**

- Existing markings
  - 'Access Protection' marking
  - Prohibition of waiting at any time (double yellow lines)
  - Disabled parking
- Proposed markings
  - 'Access Protection' marking
  - Prohibition of waiting at any time (double yellow lines)
  - Residents parking Monday to Saturday, 8am-6pm
  - Zone Boundary (Residents parking)

REV	DATE	REVISION DESCRIPTION	REV BY	CHECKED	DATE CHD

Status: CONSULTATION ISSUED FOR THE PURPOSE SHOWN ONLY

**EICH CYNGOR arleinamdani**  
[www.sirgar.llyw.cymru](http://www.sirgar.llyw.cymru)  
**YOUR COUNCIL doitonline**  
[www.carmarthenshire.gov.wales](http://www.carmarthenshire.gov.wales)

**Stephen G Pilliner**  
 Pennaeth Trafnidiaeth a Pheirianneg, Adran Amgylchedd, Bloc 1, Parc Myrddin, Waun Dew, Caerfyrddin SA31 1HQ  
 Head of Highways & Transport Environment Department, Block 1, Parc Myrddin, Richmond Terrace, Carmarthen, Carmarthenshire SA31 1HQ

Project: **PROPOSED RESIDENTS PARKING**


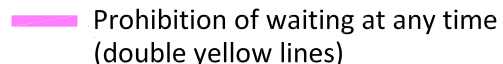
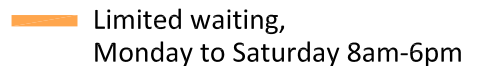
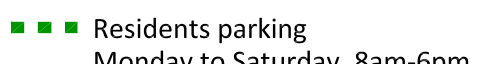
Title: **ALBERT STREET AND MIN Y MOR, LLANELLI**

Made By	Date	Checked	Date	Authorised	Date
JM	10.06.20	NG	12.06.20	VP	12.06.20


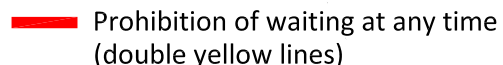
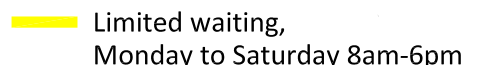
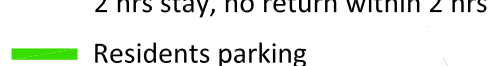
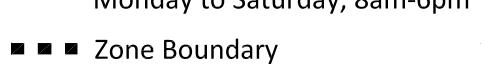
Scale: <b>1:1,000</b>	Project no. <b>80/0041/283</b>
	Drawing no. <b>RES/01(c)</b> Revision <b>-</b>

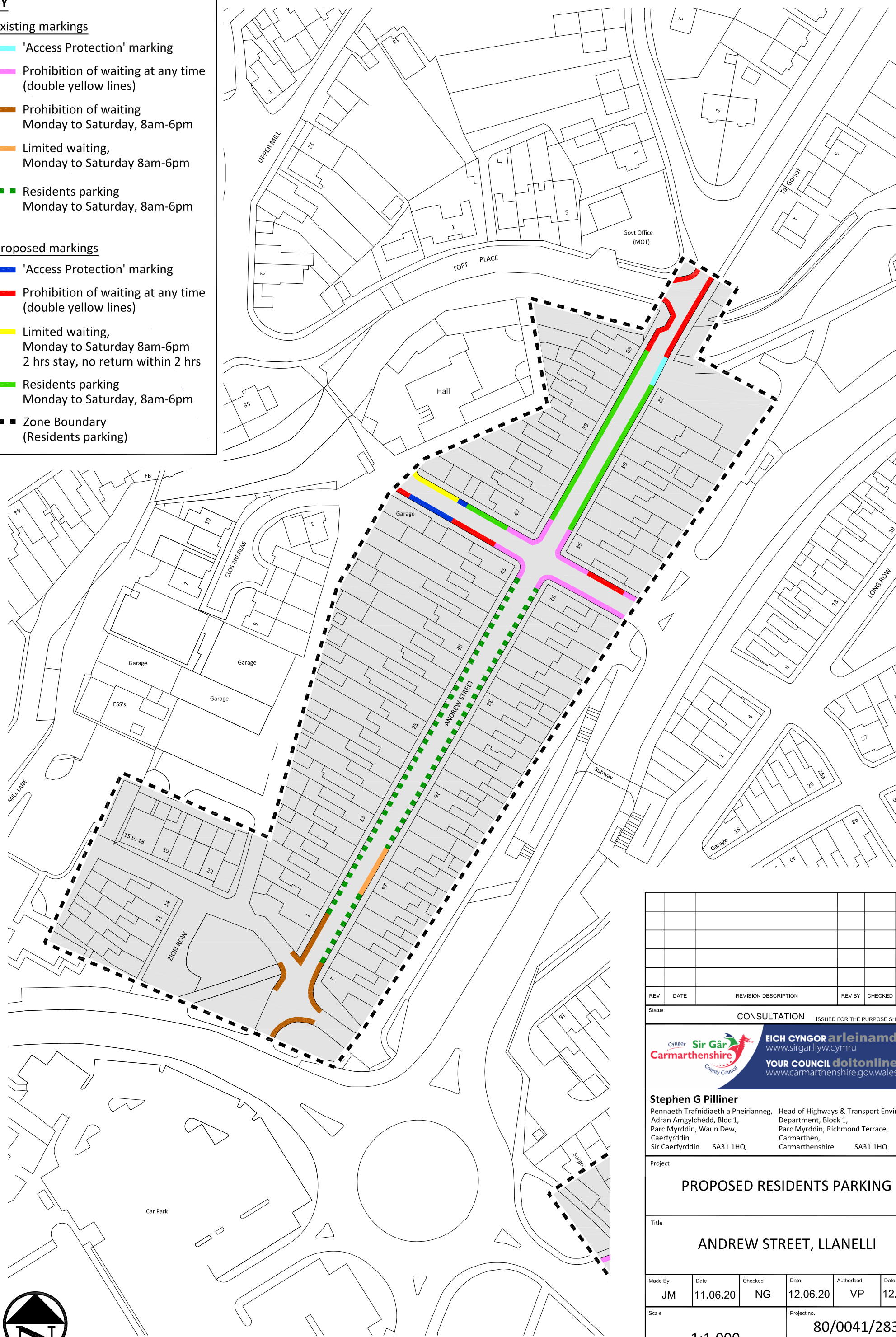
**KEY**

• Existing markings

-  'Access Protection' marking
-  Prohibition of waiting at any time (double yellow lines)
-  Prohibition of waiting Monday to Saturday, 8am-6pm
-  Limited waiting, Monday to Saturday 8am-6pm
-  Residents parking Monday to Saturday, 8am-6pm

• Proposed markings

-  'Access Protection' marking
-  Prohibition of waiting at any time (double yellow lines)
-  Limited waiting, Monday to Saturday 8am-6pm 2 hrs stay, no return within 2 hrs
-  Residents parking Monday to Saturday, 8am-6pm
-  Zone Boundary (Residents parking)




REV	DATE	REVISION DESCRIPTION	REV BY	CHECKED	DATE CHD

Status: CONSULTATION ISSUED FOR THE PURPOSE SHOWN ONLY


**EICH CYNGOR arleinamdani**  
[www.sirgar.llyw.cymru](http://www.sirgar.llyw.cymru)  
**YOUR COUNCIL doitonline**  
[www.carmarthenshire.gov.wales](http://www.carmarthenshire.gov.wales)

**Stephen G Pilliner**  
 Pennaeth Trafnidiaeth a Pheirianneg, Adran Amgylchedd, Bloc 1, Parc Myrddin, Waun Dew, Caerfyrddin Sir Caerfyrddin SA31 1HQ  
 Head of Highways & Transport Environment Department, Block 1, Parc Myrddin, Richmond Terrace, Carmarthen, Carmarthenshire SA31 1HQ

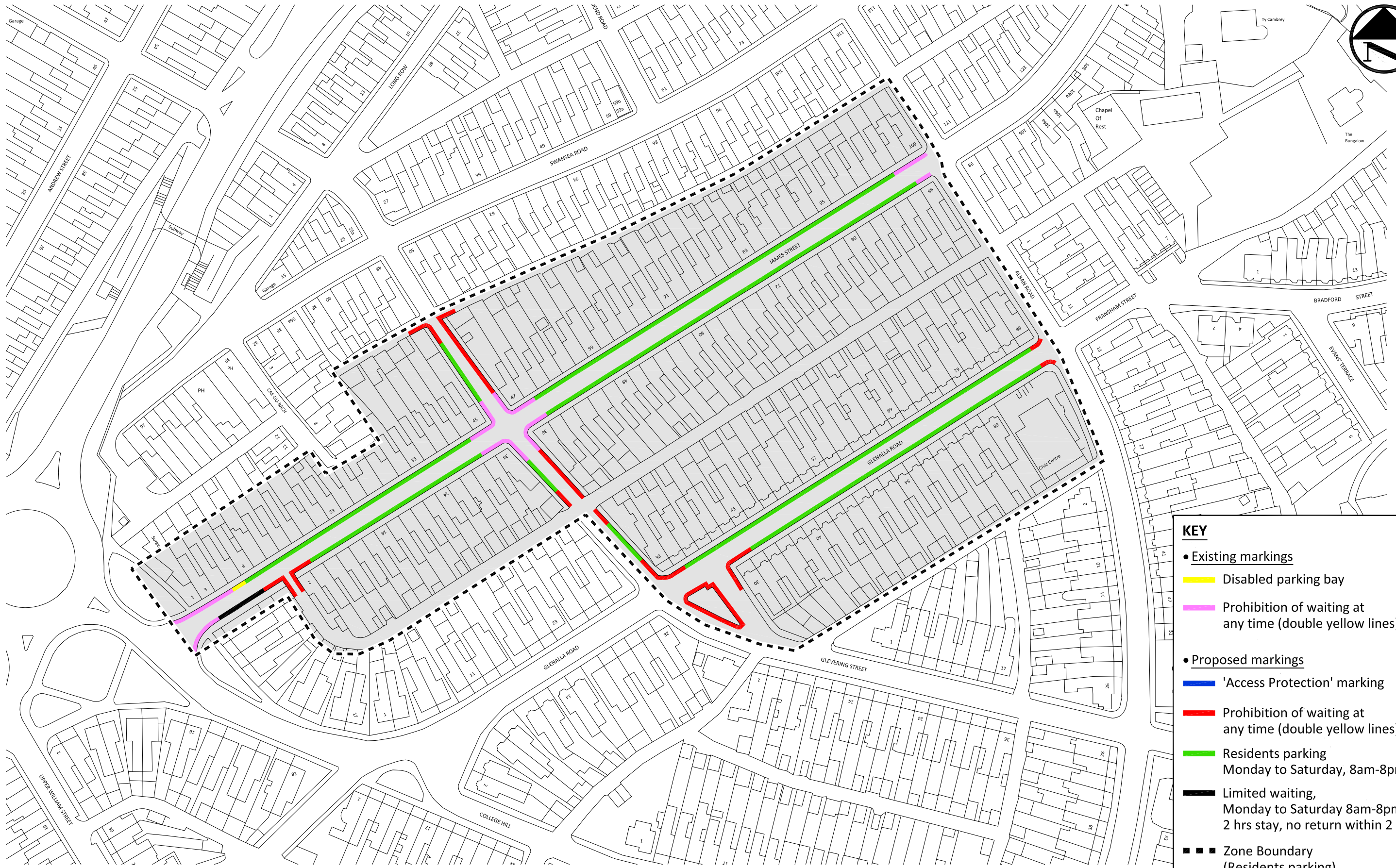
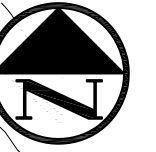
Project: **PROPOSED RESIDENTS PARKING**

Title: **ANDREW STREET, LLANELLI**

Made By	Date	Checked	Date	Authorised	Date
JM	11.06.20	NG	12.06.20	VP	12.06.20

Scale: <b>1:1,000</b>	Project no. <b>80/0041/283</b>
	Drawing no. <b>RES/02(c)</b> Revision <b>-</b>





**KEY**

- Existing markings
- Disabled parking bay
- Prohibition of waiting at any time (double yellow lines)
- Proposed markings
- 'Access Protection' marking
- Prohibition of waiting at any time (double yellow lines)
- Residents parking Monday to Saturday, 8am-8pm
- Limited waiting, Monday to Saturday 8am-8pm 2 hrs stay, no return within 2 hrs
- Zone Boundary (Residents parking)

© Hawlfraint y Goron a hawliau cronfa ddata 2021 Arolwg Ordnans 100023377 / © Crown copyright and database rights 2021 Ordnance Survey 100023377

**EICH CYNGOR arleinamdani**  
www.sirgar.llyw.cymru

**YOUR COUNCIL doitonline**  
www.carmarthenshire.gov.wales

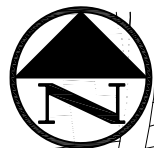
**Stephen G Pilliner**  
Pennaeth Trafnidiaeth a Pheirianneg,  
Adran Amgylchedd, Parc Myrddin,  
Wauan Dew, Caerfyrddin,  
Sir Caerfyrddin SA31 1HQ

Head of Highways & Transport  
Environment Department,  
Parc Myrddin, Richmond Terrace,  
Carmarthen, Carmarthenshire SA31 1HQ

REV	DATE	REVISION DESCRIPTION	REV BY	CHECKED	DATE CHD
Status: CONSULTATION ISSUED FOR THE PURPOSE SHOWN ONLY					

Project	<b>PROPOSED RESIDENTS PARKING</b>
Title	<b>JAMES STREET, LLANELLI</b>

Made By	JM	Date	11.06.20	Checked	NG	Date	12.06.20	Authorised	VP	Date	12.06.20
Scale	1:1,500		Project no.	80/0041/283		Drawing no.	RES/03(c)		Revision	-	



**KEY**

- Existing markings
  - Disabled parking bay (unregulated)
  - Prohibition of waiting at any time (double yellow lines)
  - Residents parking  
Monday to Saturday, 8am-6pm
- Proposed markings
  - 'Access Protection' marking
  - Residents parking  
Monday to Saturday, 8am-6pm
  - ■ ■ Zone Boundary  
(Residents parking)

REV	DATE	REVISION DESCRIPTION	REV BY	CHECKED	DATE CHD

Status: CONSULTATION ISSUED FOR THE PURPOSE SHOWN ONLY

**EICH CYNGOR arleinamdani**  
www.sirgar.llyw.cymru  
**YOUR COUNCIL doitonline**  
www.carmarthenshire.gov.wales

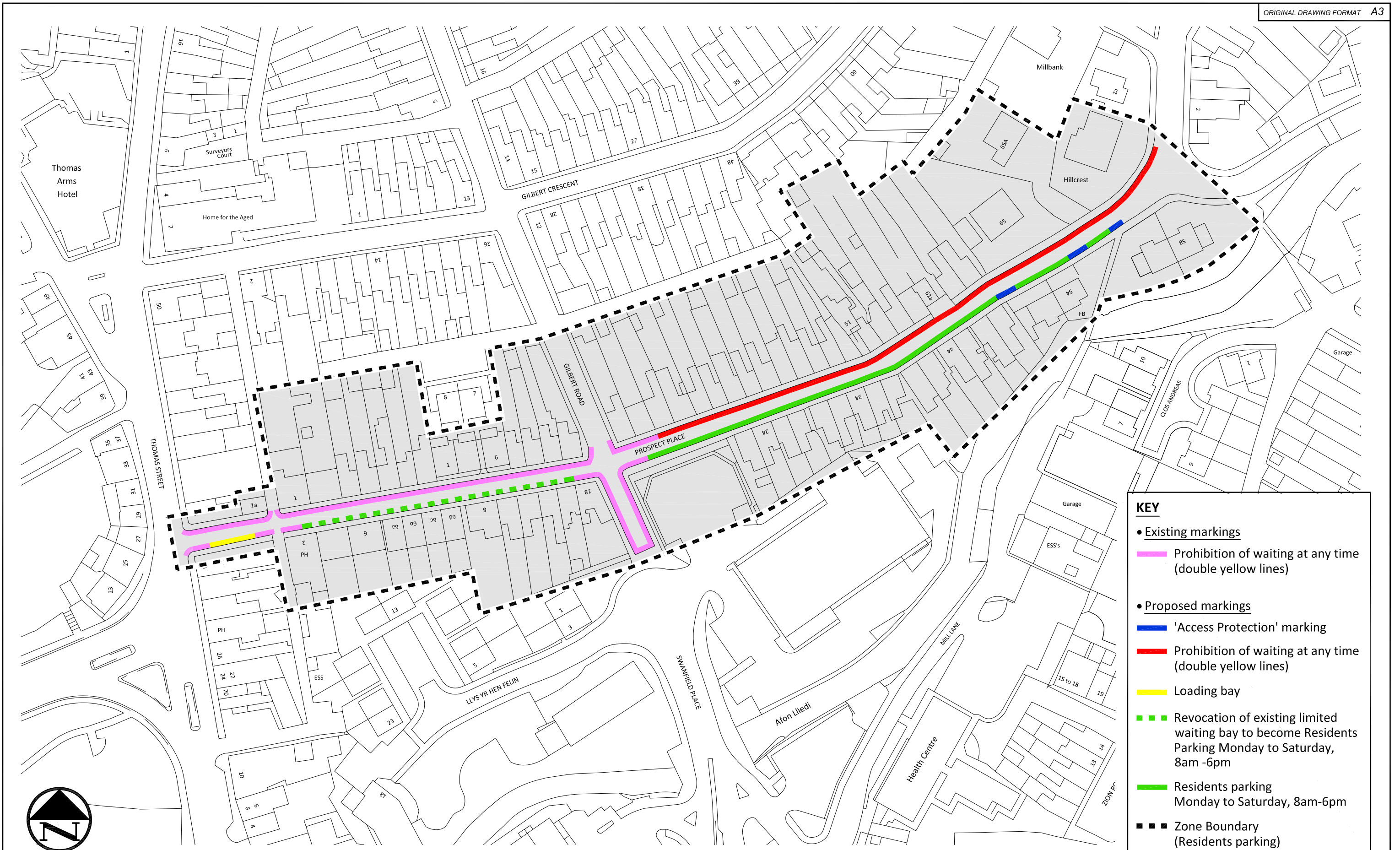
**Stephen G Pilliner**  
Pennaeth Trafnidiaeth a Pheirianneg, Adran Amgylchedd, Bloc 1, Parc Myrddin, Waun Dew, Caerfyrddin, Sir Caerfyrddin SA31 1HQ  
Head of Highways & Transport Environment, Department, Block 1, Parc Myrddin, Richmond Terrace, Carmarthen, Carmarthenshire SA31 1HQ

Project: **PROPOSED RESIDENTS PARKING**

Title: **HARRIES AVENUE, LLANELLI**

Made By	Date	Checked	Date	Authorised	Date
JM	11.06.20	NG	12.06.20	VP	12.06.20

Scale: <b>1:1,500</b>	Project no.: <b>80/0041/283</b>
	Drawing no.: <b>RES/04(c)</b> Revision: <b>-</b>



**KEY**

- Existing markings
- Proposed markings

- Prohibition of waiting at any time (double yellow lines)
- 'Access Protection' marking
- Prohibition of waiting at any time (double yellow lines)
- Loading bay
- Revocation of existing limited waiting bay to become Residents Parking Monday to Saturday, 8am -6pm
- Residents parking Monday to Saturday, 8am-6pm
- Zone Boundary (Residents parking)



© Hawlfraint y Goron a hawliau cronfa ddata 2021 Arolwg Ordnans 100023377 / © Crown copyright and database rights 2021 Ordnance Survey 100023377

**EICH CYNGOR arleinamdani**  
www.sigar.llyw.cymru

**YOUR COUNCIL doitonline**  
www.carmarthenshire.gov.wales

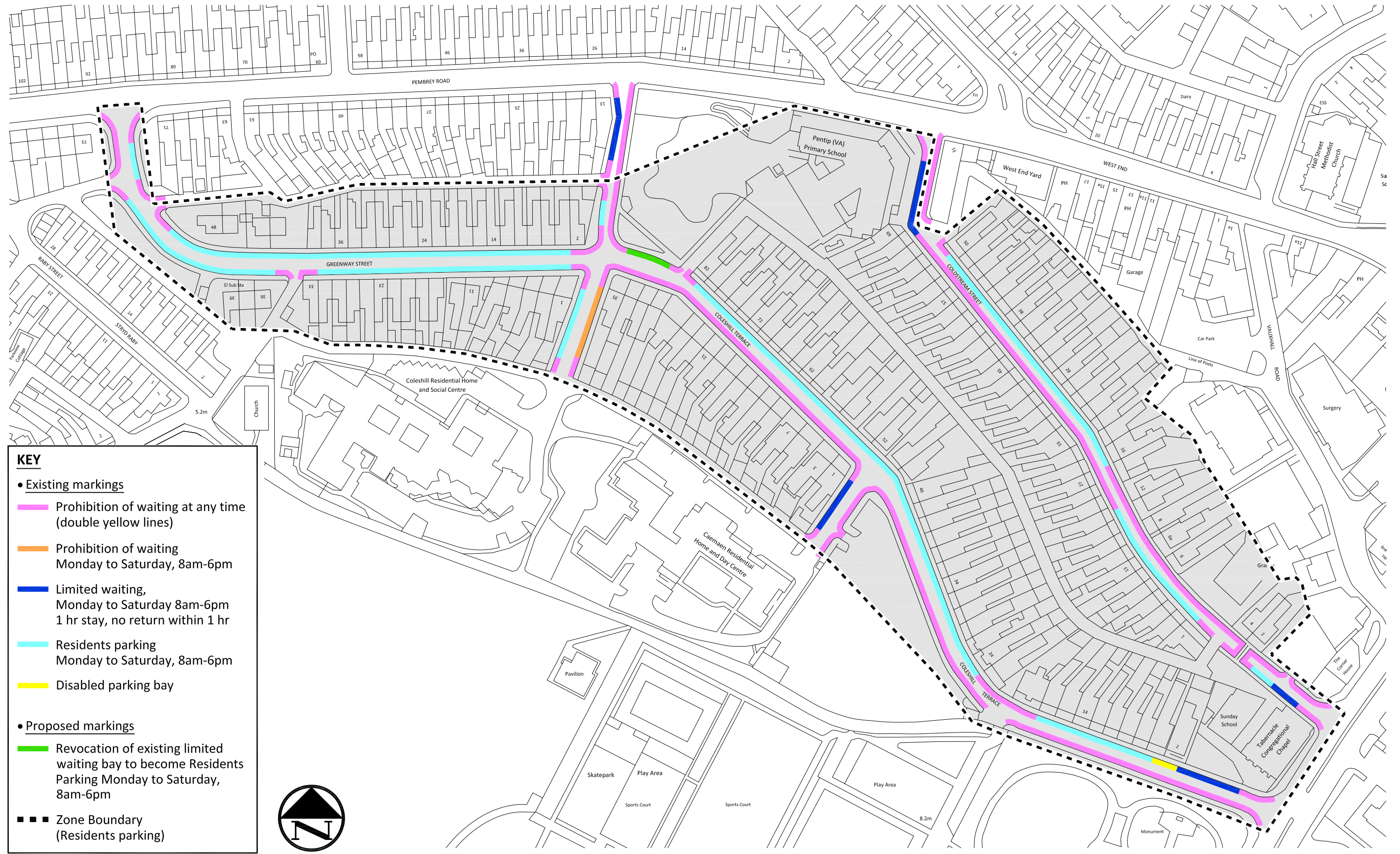
**Stephen G Pilliner**  
Pennaeth Trafnidiaeth a Pheirianneg,  
Adran Amgylchedd, Parc Myrddin,  
Wauan Dew, Caerfyrddin,  
Sir Caerfyrddin SA31 1HQ

Head of Highways & Transport  
Environment Department,  
Parc Myrddin, Richmond Terrace,  
Carmarthen, Carmarthenshire SA31 1HQ

REV	DATE	REVISION DESCRIPTION	REV BY	CHECKED	DATE CHD
Status: CONSULTATION ISSUED FOR THE PURPOSE SHOWN ONLY					

Project	<b>PROPOSED RESIDENTS PARKING</b>
Title	<b>PROSPECT PLACE, LLANELLI</b>

Made By	Date	Checked	Date	Authorised	Date
JM	11.06.20	NG	12.06.20	VP	12.06.20
Scale	Project no.				
1:1,000	80/0041/283				
	Drawing no.				Revision
	RES/05(c)				-



**KEY**

- Existing markings
  - Prohibition of waiting at any time (double yellow lines)
  - Prohibition of waiting Monday to Saturday, 8am-6pm
  - Limited waiting, Monday to Saturday 8am-6pm 1 hr stay, no return within 1 hr
  - Residents parking Monday to Saturday, 8am-6pm
  - Disabled parking bay
- Proposed markings
  - Revocation of existing limited waiting bay to become Residents Parking Monday to Saturday, 8am-6pm
  - Zone Boundary (Residents parking)



© Hawlfraint y Goron a hawliau cronfa ddata 2021 Arolwg Ordnans 100023377 / © Crown copyright and database rights 2021 Ordnance Survey 100023377

**EICH CYNGOR arleinamdani**  
www.sirgar.llyw.cymru

**YOUR COUNCIL doitonline**  
www.carmarthenshire.gov.wales

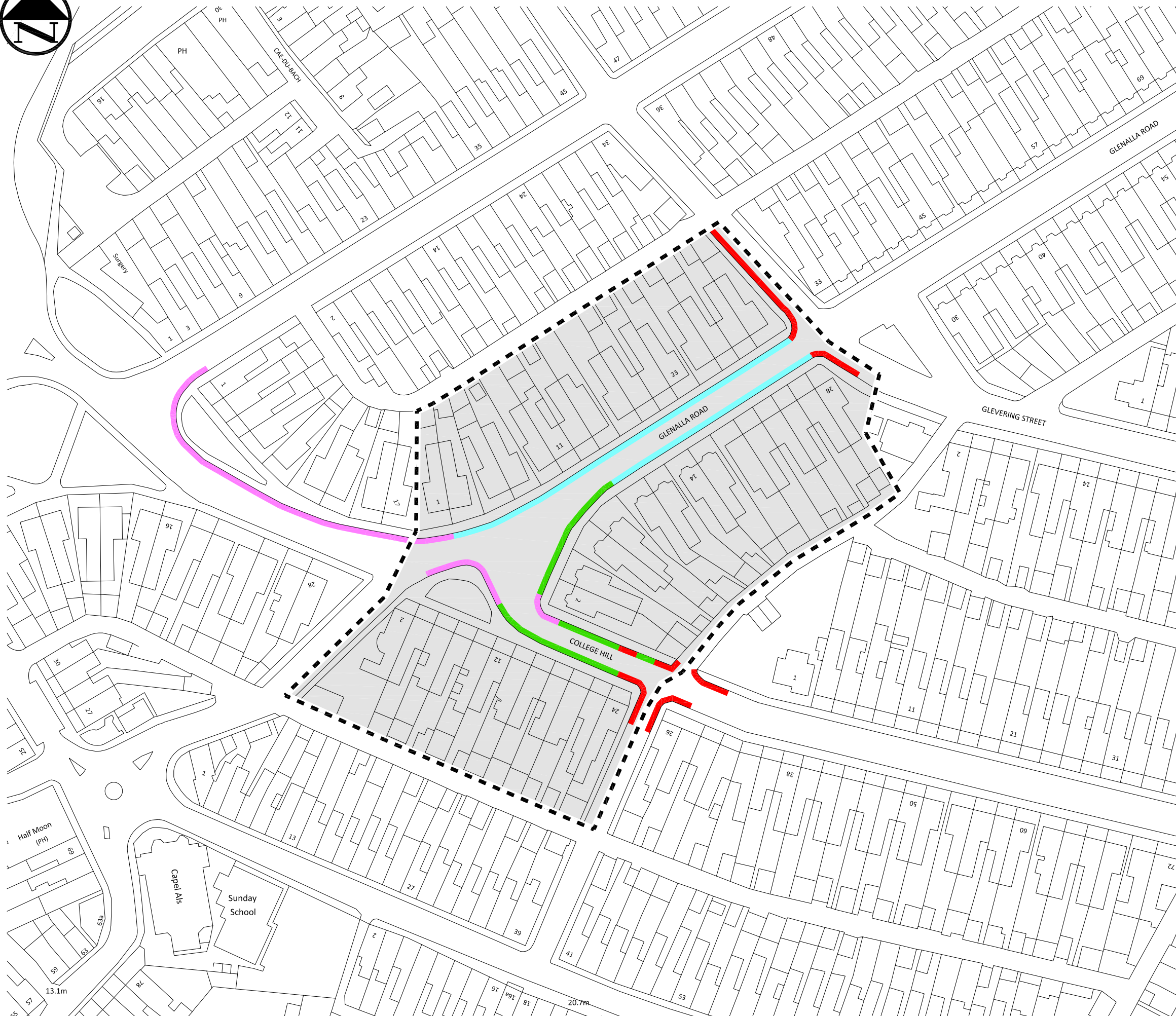
**Stephen G Pilliner**  
Pennaeth Trafnidiaeth a Pheirianneg,  
Adran Amgylchedd, Parc Myrddin,  
Wauan Dew, Caerfyrddin,  
Sir Caerfyrddin SA31 1HQ

Head of Highways & Transport  
Environment Department,  
Parc Myrddin, Richmond Terrace,  
Carmarthen, Carmarthenshire SA31 1HQ

REV	DATE	REVISION DESCRIPTION	REV BY	CHECKED	DATE CHD
Status: CONSULTATION ISSUED FOR THE PURPOSE SHOWN ONLY					

Project	<b>PROPOSED RESIDENTS PARKING</b>
Title	<b>COLESHILL TERRACE, LLANELLI</b>

Made By	JM	Date	27.10.20	Checked		Date		Authorised		Date		
Scale	1:1,500		Project no.		80/0041/283		Drawing no.		RES/06(c)		Revision	-



**KEY**

- Existing markings
  - Prohibition of waiting at any time (double yellow lines)
  - Residents parking Monday to Saturday, 8am-8pm
- Proposed markings
  - Prohibition of waiting at any time (double yellow lines)
  - Residents parking Monday to Saturday, 8am-8pm
  - ■ ■ Zone Boundary (Residents parking)

REV	DATE	REVISION DESCRIPTION	REV BY	CHECKED	DATE CHD

Status: CONSULTATION ISSUED FOR THE PURPOSE SHOWN ONLY

**EICH CYNGOR arleinamdani**  
www.sirgar.llyw.cymru  
**YOUR COUNCIL doitonline**  
www.carmarthenshire.gov.wales

**Stephen G Pilliner**  
Pennaeth Trafnidiaeth a Pheirianneg, Adran Amgylchedd, Bloc 1, Parc Myrddin, Waun Dew, Caerfyrddin, Sir Caerfyrddin SA31 1HQ  
Head of Highways & Transport Environment, Department, Block 1, Parc Myrddin, Richmond Terrace, Carmarthen, Carmarthenshire SA31 1HQ

Project  
**PROPOSED RESIDENTS PARKING**

Title  
**COLLEGE HILL, LLANELLI**

Made By	Date	Checked	Date	Authorised	Date
JM	14.08.20				
Scale	Project no.		Drawing no.		
1:1,000	80/0041/283		RES/07(c)		